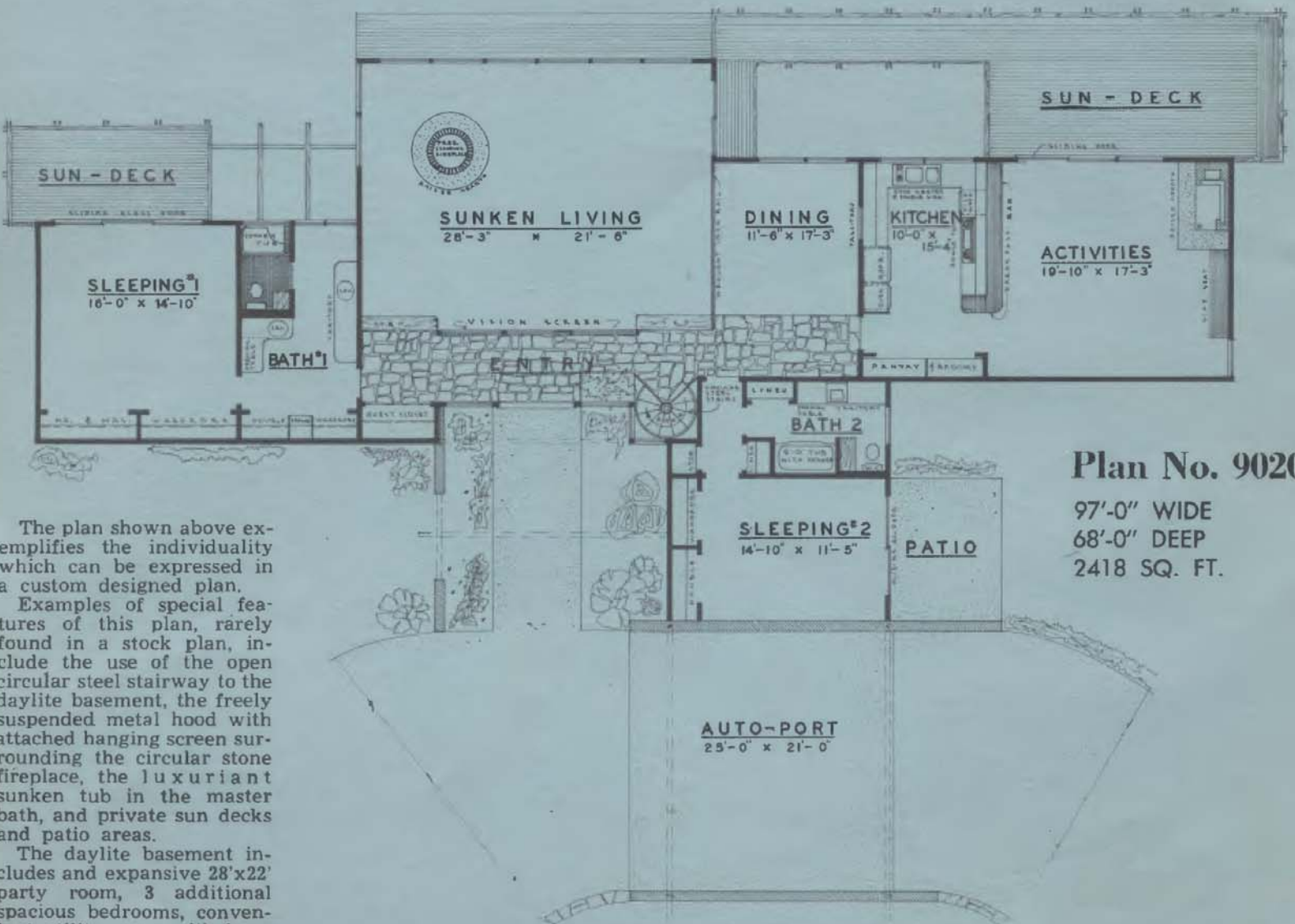
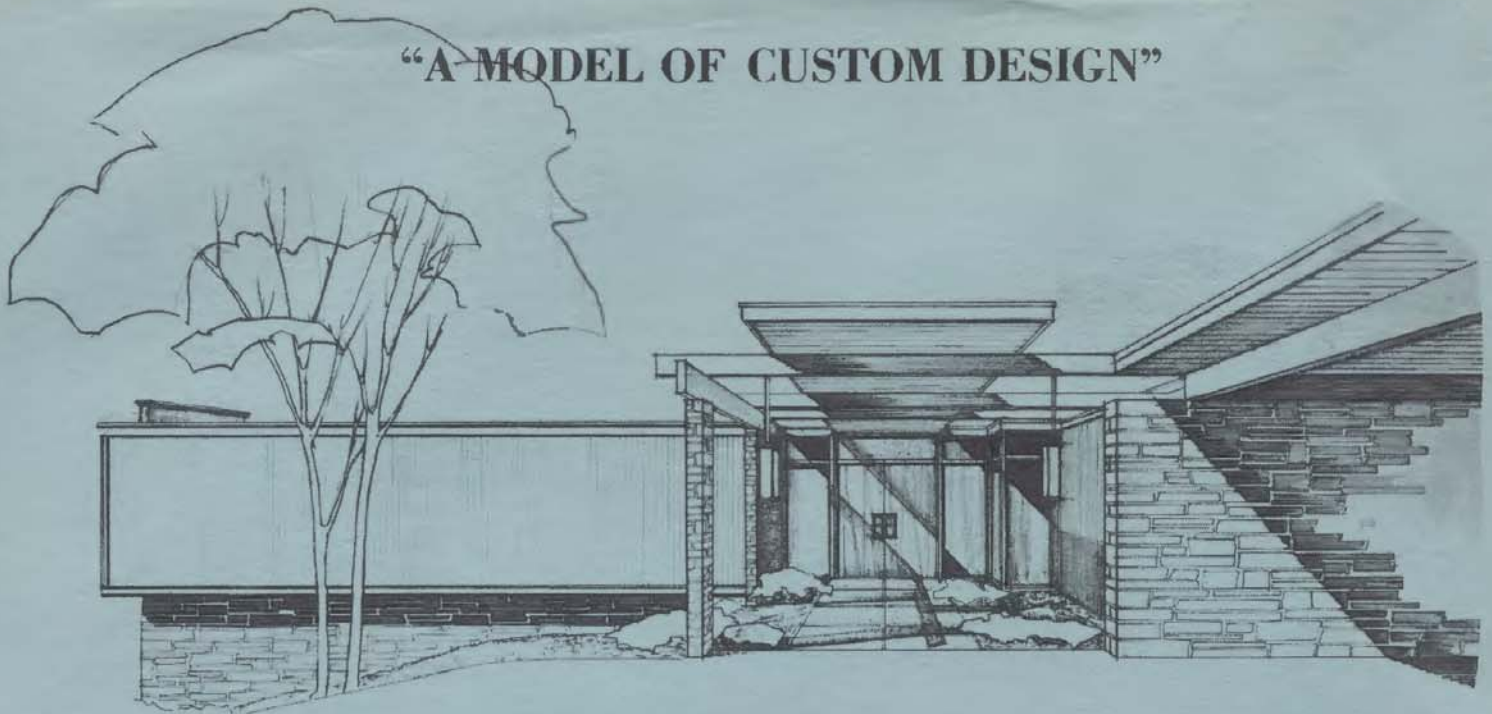


# "A MODEL OF CUSTOM DESIGN"



**Plan No. 9020**

97'-0" WIDE  
68'-0" DEEP  
2418 SQ. FT.

The plan shown above exemplifies the individuality which can be expressed in a custom designed plan. Examples of special features of this plan, rarely found in a stock plan, include the use of the open circular steel stairway to the daylite basement, the freely suspended metal hood with attached hanging screen surrounding the circular stone fireplace, the luxuriant sunken tub in the master bath, and private sun decks and patio areas.

The daylite basement includes and expansive 28'x22' party room, 3 additional spacious bedrooms, convenient utility room with ironing and sewing area, and combined furnace and storage room.

Submit a rough sketch or letter of ideas to the experienced and imaginative staff at L. M. Brunier & Associates and through our custom design service, a home characteristic of your individuality and needs can be created for you. We pride in the meticulous thought given throughout all planning stages to the exterior esthetics as well as to the functional livability within the house.